

Texas Instruments

DESIGNER:  
Brian Ashelin  
(507) 536-2901

TITLE:

RF4CE\_4MOD



ENGINEER:  
Jim Noxon  
(507) 536-2908

PART NO.:  
RF4CE\_4MOD

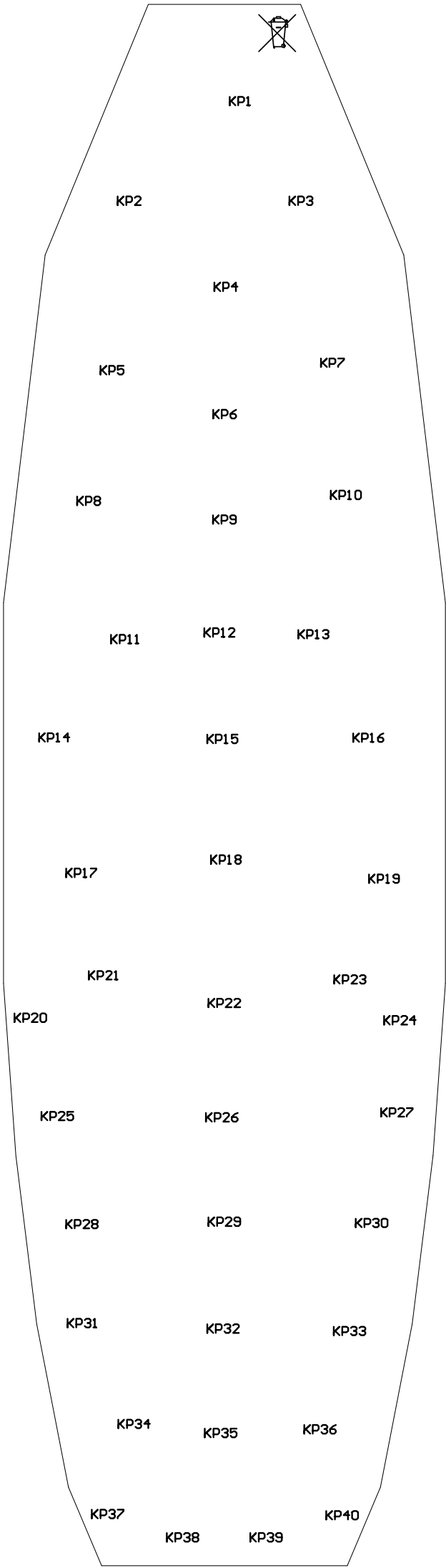
REV: C


DATE: 30-Jun-2011

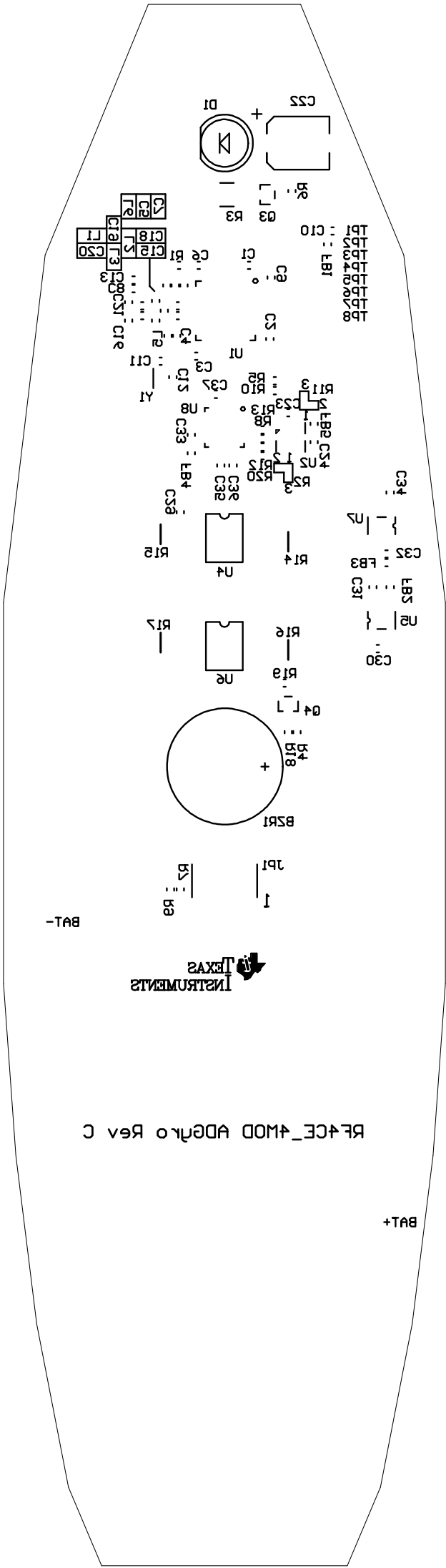
FILE NAME: RF4CE\_4MOD.PCB

LAYER: Mechanical5

GERBER: .GM5



Texas Instruments				
DESIGNER: Brian Ashelin (507) 536-2901	TITLE:  RF4CE_4MOD			
ENGINEER: Jim Noxon (507) 536-2908	PART NO.: RF4CE_4MOD			REV: C
FILE NAME: RF4CE_4MOD.PCB		LAYER: Top Overlay		GERBER: .GTO



Texas Instruments

DESIGNER:  
Brian Ashelin  
(507) 536-2901

TITLE:

RF4CE\_4MOD



ENGINEER:  
Jim Noxon  
(507) 536-2908

PART NO.:  
RF4CE\_4MOD

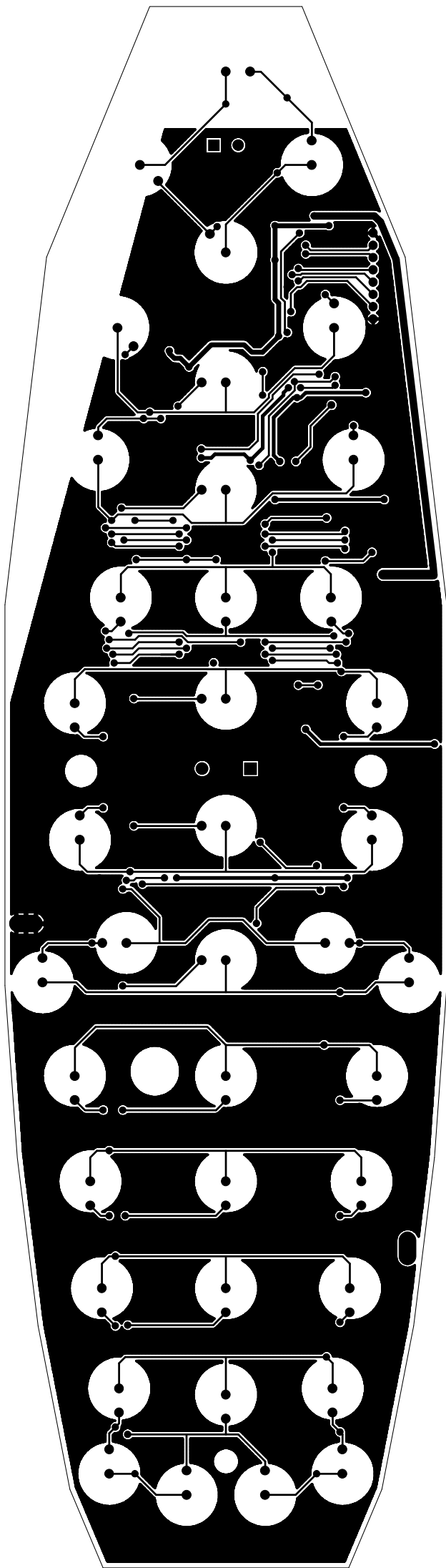
REV: C

DATE: 30-Jun-2011

FILE NAME: RF4CE\_4MOD.PCB

LAYER: Bottom Overlay

GERBER: .GBO



Texas Instruments

DESIGNER:  
Brian Ashelin  
(507) 536-2901

TITLE:

RF4CE\_4MOD



ENGINEER:  
Jim Noxon  
(507) 536-2908

PART NO.:  
RF4CE\_4MOD

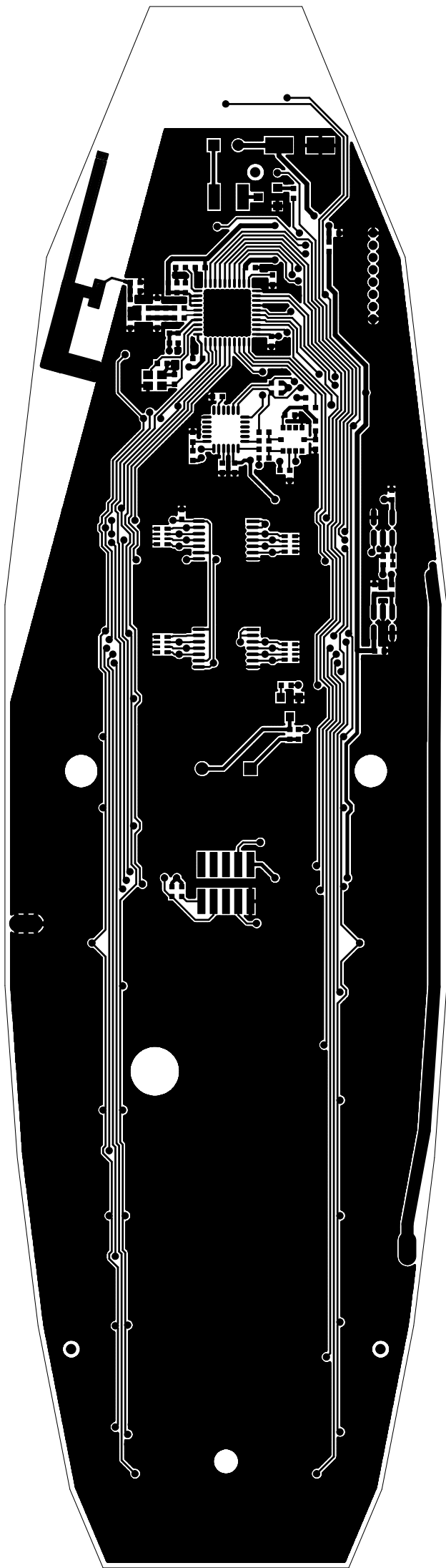
REV: C

DATE: 30-Jun-2011

FILE NAME: RF4CE\_4MOD.PCB

LAYER: TopLayer

GERBER: .GTL



Texas Instruments

DESIGNER:  
Brian Ashelin  
(507) 536-2901

TITLE:

RF4CE\_4MOD



ENGINEER:  
Jim Noxon  
(507) 536-2908

PART NO.:  
RF4CE\_4MOD

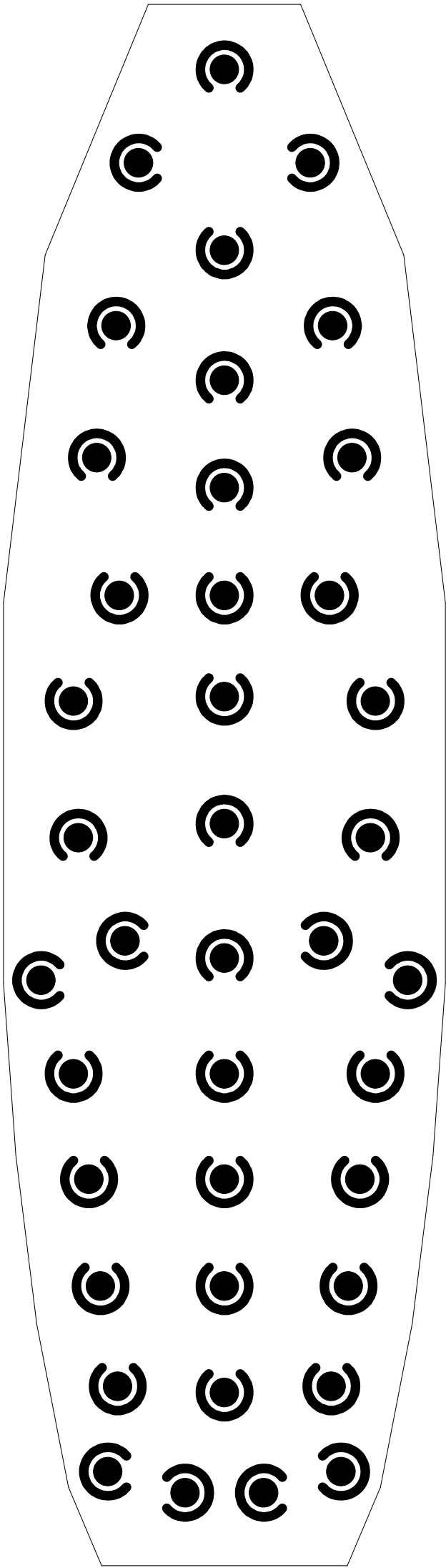
REV: C


DATE: 30-Jun-2011

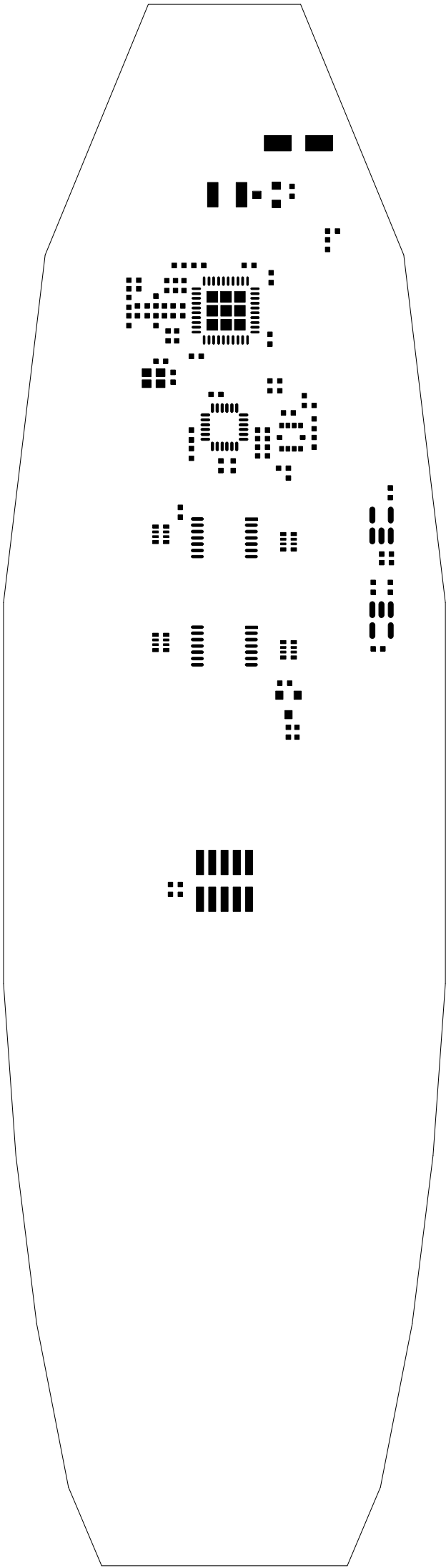
FILE NAME: RF4CE\_4MOD.PCB


LAYER: BottomLayer

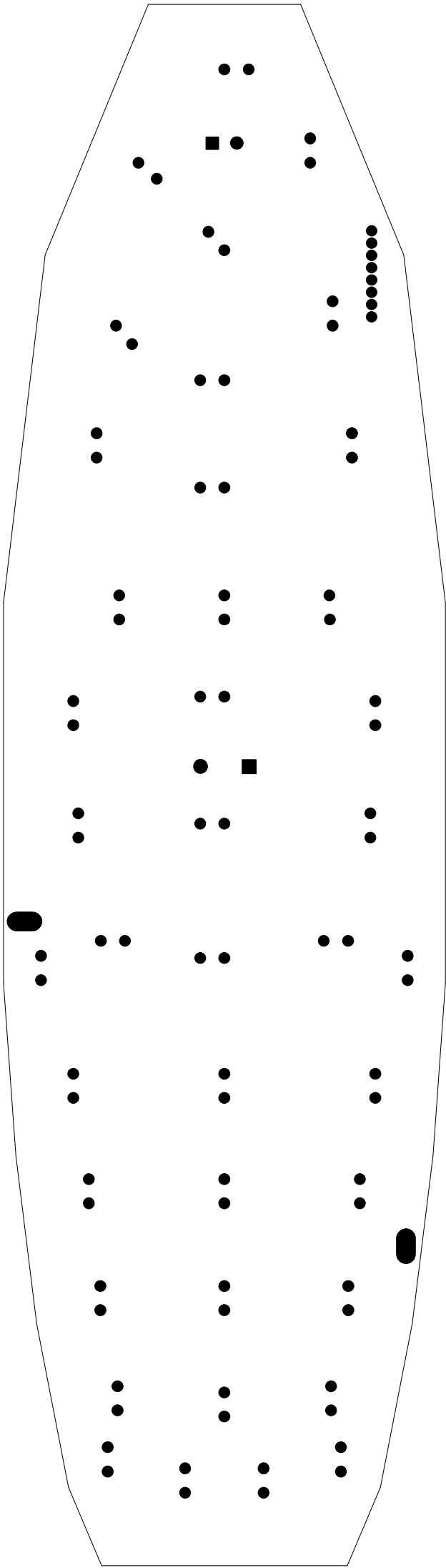
GERBER: .GBL




Texas Instruments			
DESIGNER: Brian Ashelin (507) 536-2901	TITLE:  RF4CE_4MOD		
ENGINEER: Jim Noxon (507) 536-2908	PART NO.: RF4CE_4MOD	REV: C	DATE: 30-Jun-2011
FILE NAME: RF4CE_4MOD.PCB	LAYER: Mechanical6		GERBER: .GM6

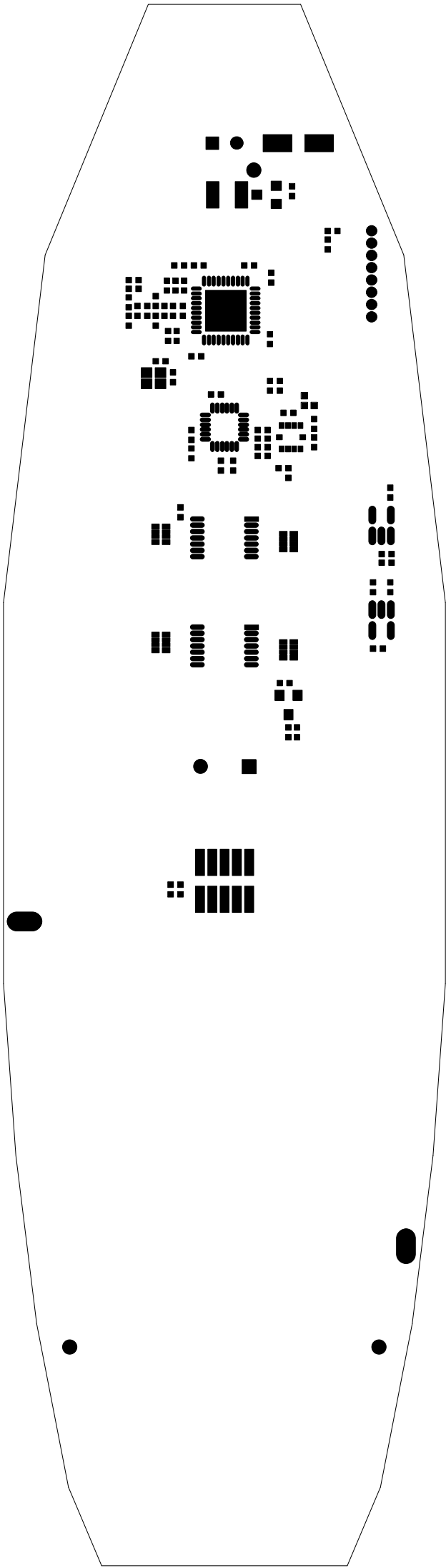



Texas Instruments			
DESIGNER: Brian Ashelin (507) 536-2901	TITLE:  RF4CE_4MOD		
ENGINEER: Jim Noxon (507) 536-2908	PART NO.: RF4CE_4MOD	REV: C	DATE: 30-Jun-2011
FILE NAME: RF4CE_4MOD.PCB	LAYER: Bottom Paste		GERBER: .GBP

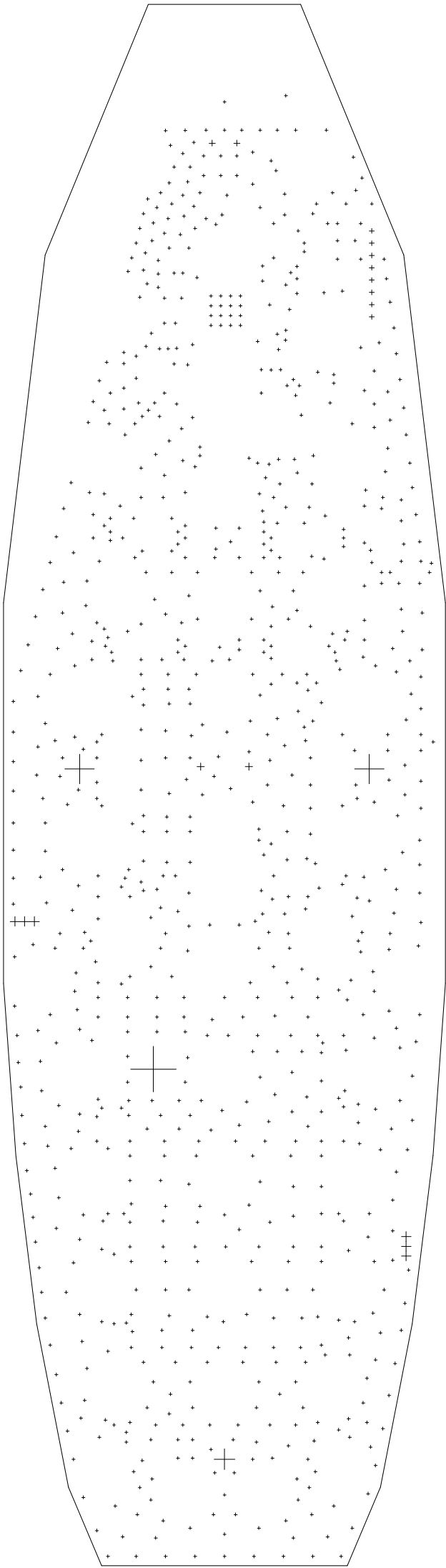



Texas Instruments			
DESIGNER: Brian Ashelin (507) 536-2901	TITLE:  RF4CE_4MOD		
ENGINEER: Jim Noxon (507) 536-2908	PART NO.: RF4CE_4MOD	REV: C	DATE: 30-Jun-2011
FILE NAME: RF4CE_4MOD.PCB	LAYER: Top Solder Mask		GERBER: .GTS

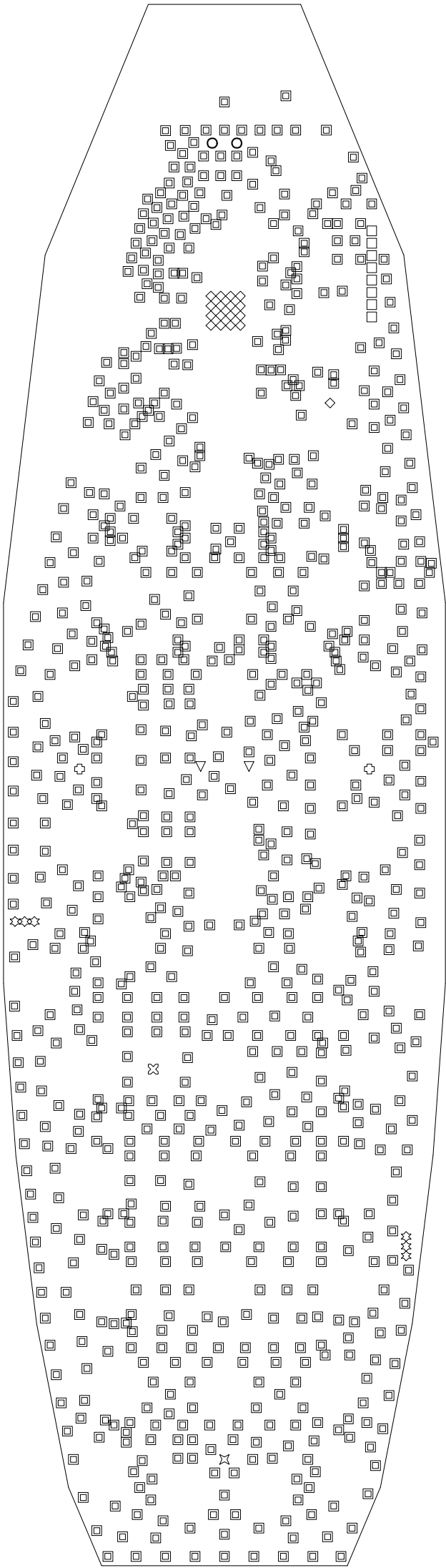




Texas Instruments			
DESIGNER: Brian Ashelin (507) 536-2901	TITLE:  RF4CE_4MOD		
ENGINEER: Jim Noxon (507) 536-2908	PART NO.: RF4CE_4MOD	REV: C	DATE: 30-Jun-2011
FILE NAME: RF4CE_4MOD.PCB	LAYER: Bottom Solder Mask		GERBER: .GBS




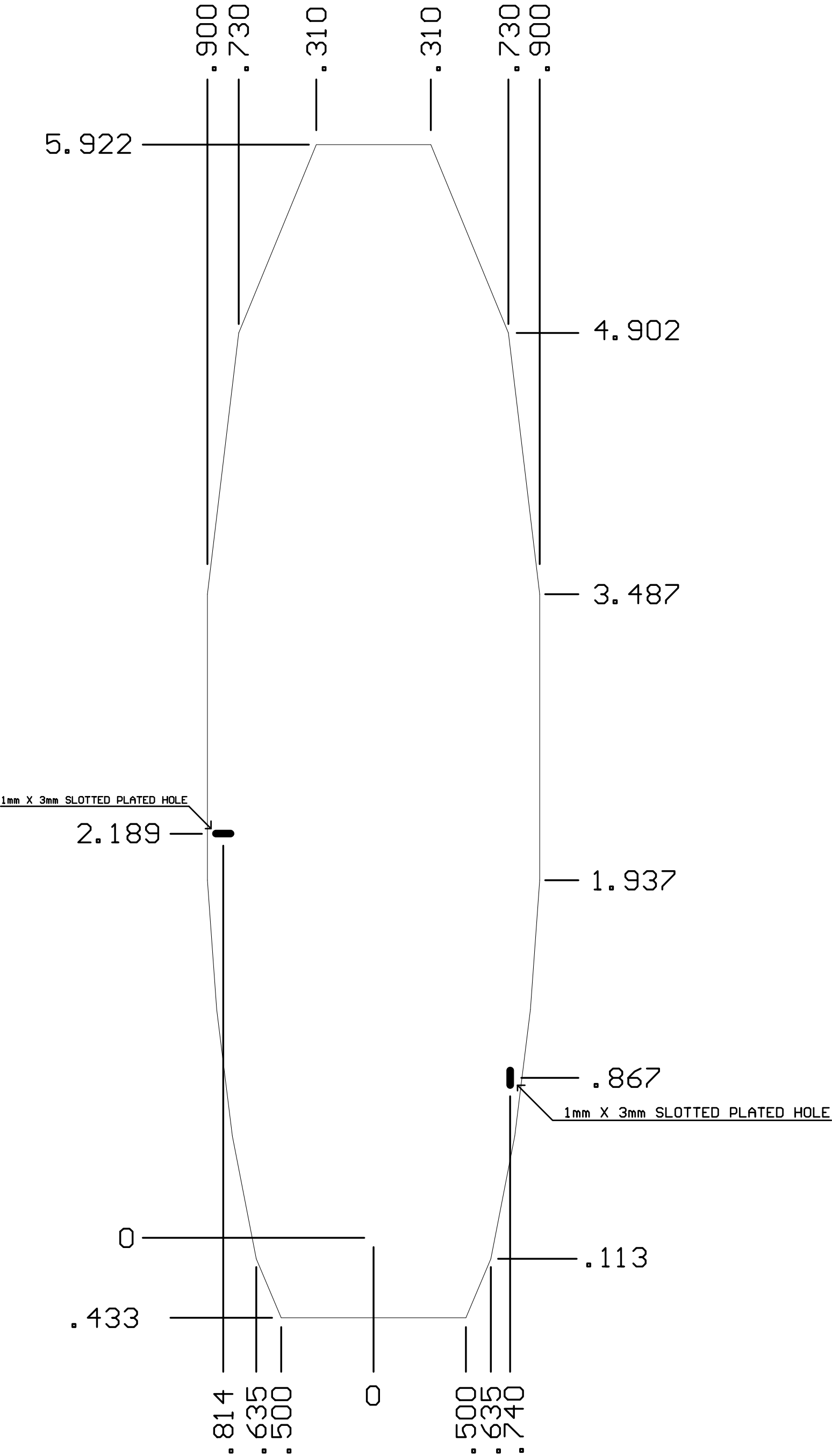
Texas Instruments			
DESIGNER: Brian Ashelin (507) 536-2901	TITLE:  RF4CE_4MOD		
ENGINEER: Jim Noxon (507) 536-2908	PART NO.: RF4CE_4MOD	REV: C	DATE: 30-Jun-2011
FILE NAME: RF4CE_4MOD.PCB		LAYER: DrillGuide	GERBER: .GG1




□	867	13mil	0.3302mm	PTH
◇	17	13.5mil	0.3429mm	PTH
□	8	20mil	0.508mm	PTH
○	2	25mil	0.635mm	PTH
▽	2	30mil	0.762mm	PTH
☆	6	39.37mil	1mm	PTH
✕	1	85mil	2.159mm	NPTH
⊕	2	120mil	3.048mm	NPTH
⊗	1	185mil	4.699mm	NPTH
	906	Total		

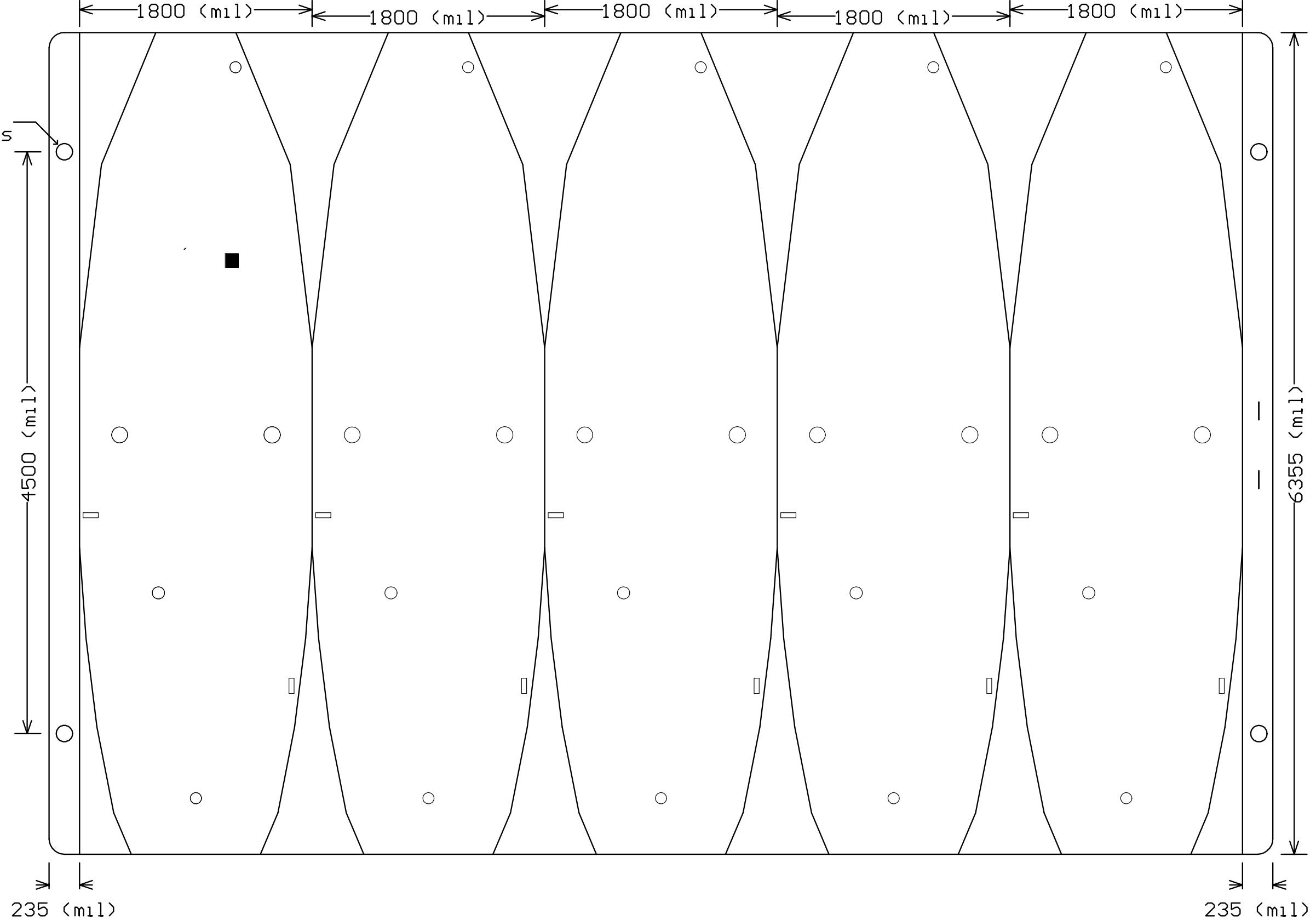
Drill Drawing.


Texas Instruments				
DESIGNER: Brian Ashelin (507) 536-2901	TITLE:  RF4CE_4MOD			
ENGINEER: Jim Noxon (507) 536-2908	PART NO.: RF4CE_4MOD			REV: C
FILE NAME: RF4CE_4MOD.PCB		LAYER: DrillDrawing		GERBER: .GD1



Texas Instruments			
DESIGNER: Brian Ashelin (507) 536-2901	TITLE:  RF4CE_4MOD		
ENGINEER: Jim Noxon (507) 536-2908	PART NO.: RF4CE_4MOD	REV: C	DATE: 30-Jun-2011
FILE NAME: RF4CE_4MOD.PCB	LAYER: Mechanical3		GERBER: .GM3

3.2mm holes (4X)  
Centered in Rails



Texas Instruments			
DESIGNER: Brian Ashelin (507) 536-2901	TITLE: RF4CE_4MOD		
ENGINEER: Jim Noxon (507) 536-2908	PART NO.: RF4CE_4MOD	REV: C	DATE: 30-Jun-2011
FILE NAME: RF4CE_4MOD.PCB	LAYER: Mechanical8	GERBER: .GM8	